

Standardized Impact Sound Pressure Levels according to ISO 140-7

Comparison of field measurements of Impact Sound Insulation of Floors

Test number: 31

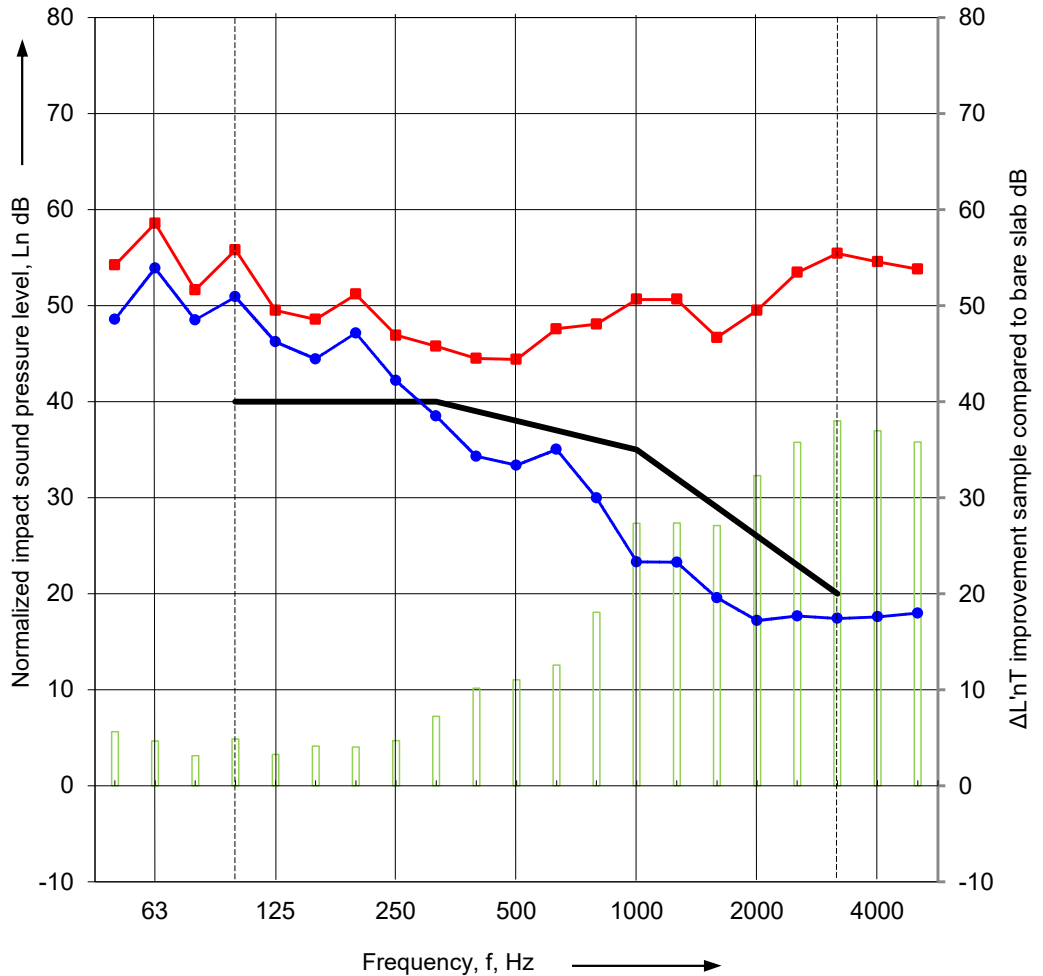
1: Sample plus substrate Clever Choice loose-laid Chevron Plank 9mm, no underlay 200mm thick concrete slab, 120mm cavity with no insulation, 13mm plasterboard ceiling

2: Substrate 200mm thick concrete slab, 120mm cavity with no insulation, 13mm plasterboard ceiling

3: $\Delta L'nT$ $\Delta L'nT$ improvement due to Clever Choice loose-laid Chevron Plank 9mm, no underlay

$L'nT,w$ 38 curve ----- Frequency range according to the
——— curve of reference values (ISO 717-2)

Frequency f Hz	L'nT dB 1/3 octave		
	1	2	3
50	49	54	5.7
63	54	59	4.7
80	49	52	3.1
100	51	56	4.9
125	46	50	3.3
160	44	49	4.1
200	47	51	4.0
250	42	47	4.7
315	39	46	7.3
400	34	44	10.2
500	33	44	11.0
630	35	48	12.6
800	30	48	18.1
1000	23	51	27.3
1250	23	51	27.4
1600	20	47	27.1
2000	17	50	32.3
2500	18	53	35.8
3150	17	55	38.0
4000	18	55	37.0
5000	18	54	35.8



$L'nT,w$	38	58	n/a
Ci	1	-11	n/a
Ci(50-2500)	5	-9	n/a
$\Delta L'nT,w$	n/a	n/a	20
AAAC Star	6	2	n/a
FIIC	64	40	n/a

Rating according to ISO 717-2

1: Sample plus substrate $L'nT,w$ (Ci ; Ci50-2500) = 38 (1 ; 5) dB;
 2: Substrate only $L'nT,w$ (Ci ; Ci50-2500) = 58 (-11 ; -9) dB;

Testing Company: Acoustic Works

Project number: 2024392 #

Location of test: Level 7 (of 15) residential building Ascot

Date of test: 3 October 2024

Client: Clever Choice Paxwood Pty Ltd

Sample area: 1m²

Room dimensions: 9.0m(L) x 4.0m(W) x 2.7m(H)